



Enhanced Services Contract Reporting Options

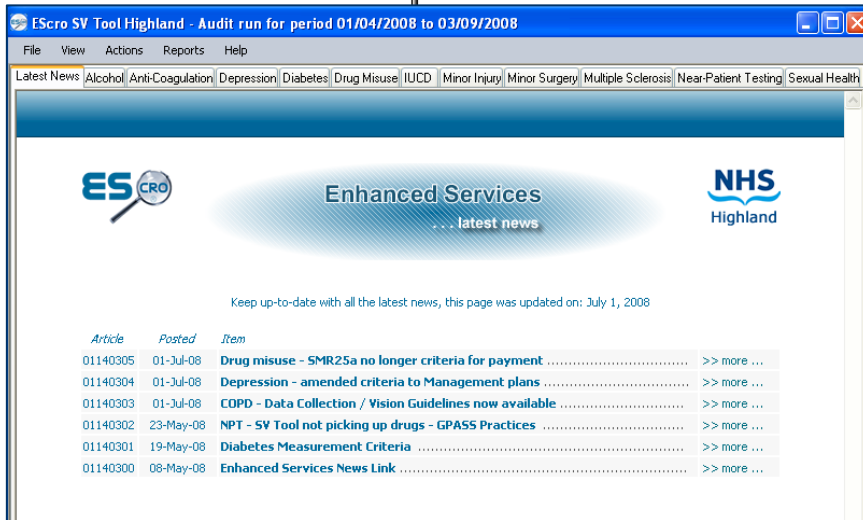
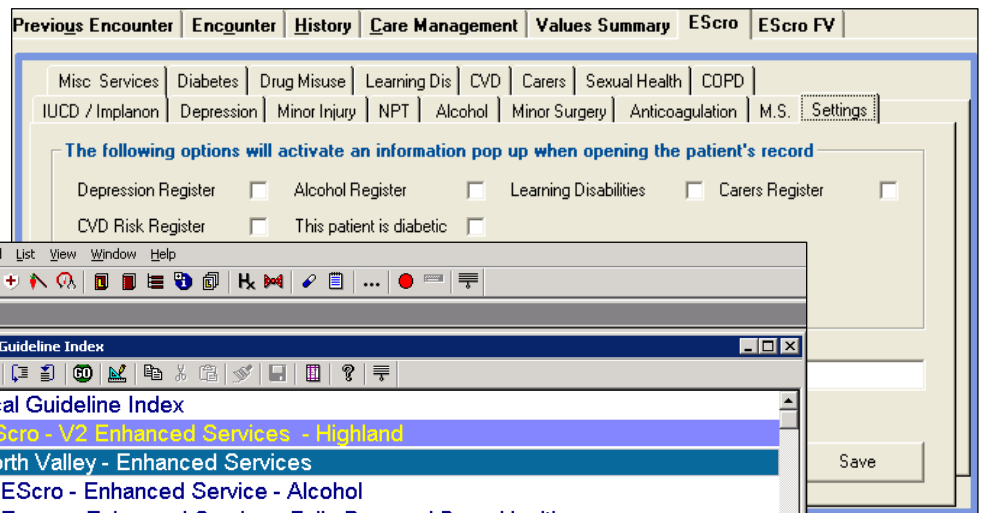
Overview

The EScro package provides a fully integrated read code based solution for audit and verification of Enhanced Service activity prior to submission for payment. In Gpass the data collection module is implemented as a consulting room extension allowing full access to existing patient demographics and clinical history.

Vision and EMIS practices are provided with Guidelines/Templates containing the same recommended read codes that can be imported into their local index.

Each of the Enhanced Services categories is displayed in their own individual tab allowing quick and easy access for data entry.

All data entered via the EScro screens/guidelines is stored as normal read codes within the clinical system, this allows full integration with clinical history and other reporting functions.



Submission Verification tool (SV Tool)

The heart of EScro is its powerful clinical system independent data engine. The same software is used in Gpass, Vision and EMIS practices, applying exactly the same payment criteria regardless of clinical system.

This allows health boards to adopt an evidence based payment system that will not be affected by practices changing system suppliers.

Every claim for payment is validated against a set of minimum criteria defined by the local health board. Only once this standard has been met will the claim be passed to finance for payment. A full audit trail is maintained linking every payment to a patient. All audits are performed in-house with no requirement for patient information to leave the practice.

*If you require further information or would like a demonstration
Please call our information desk on 01463 667356*